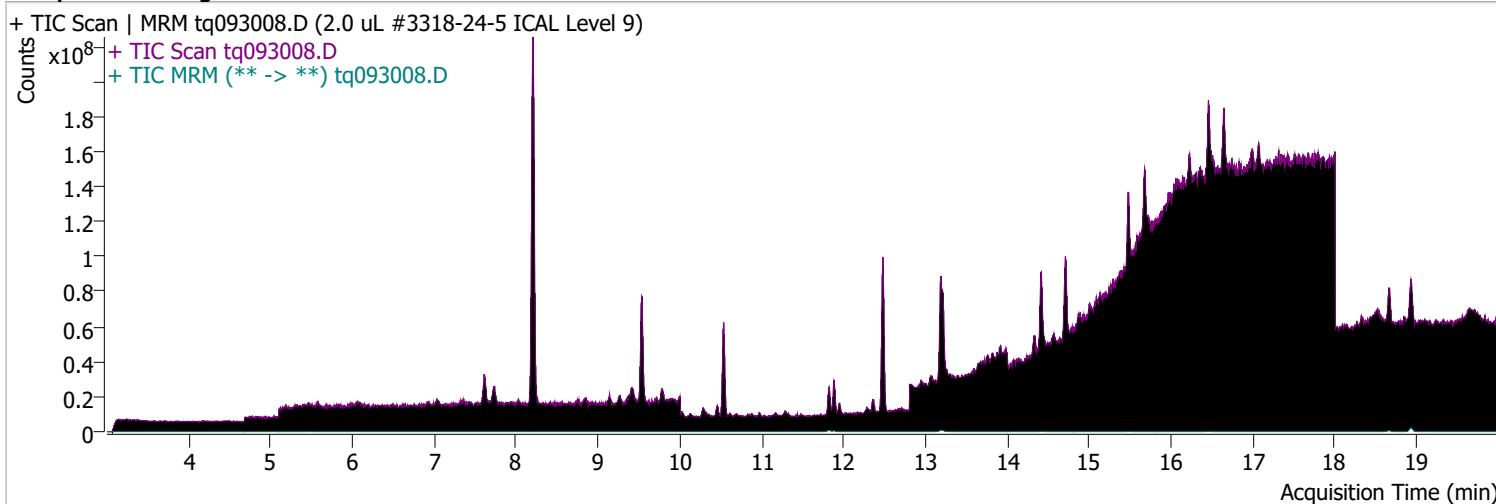


Quantitative Analysis Sample Report

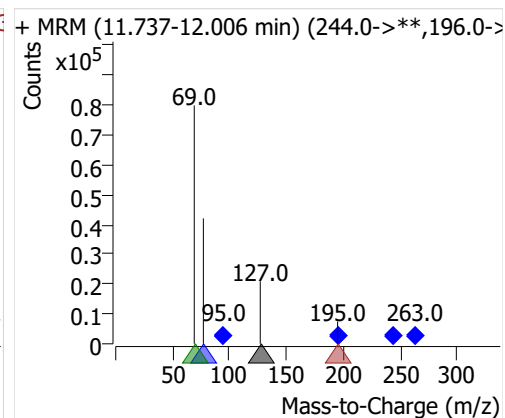
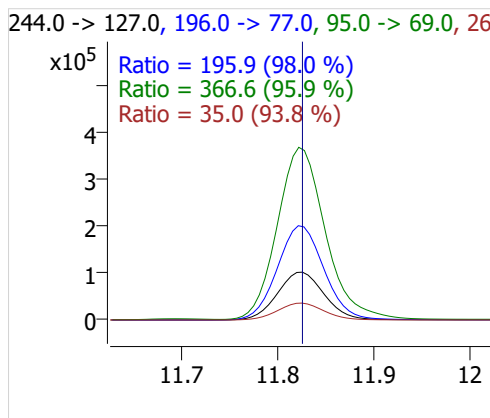
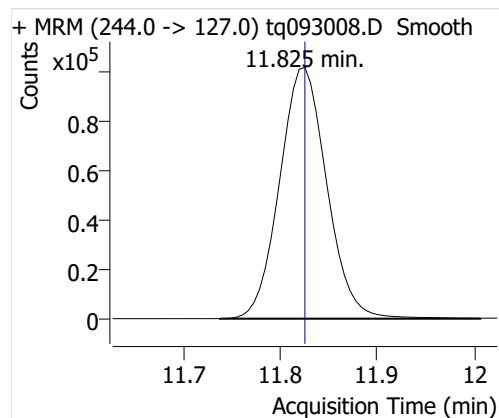
Batch Path D:\MassHunter\GCMS\1\data\03OCT22\QuantResults\03oct22.batch.bin
Analysis Time 10/4/2022 8:46 AM **Analyst Name** ES-AREA1\US32_USR_INS22923
Report Time 10/28/2022 8:56:17 AM **Reporter Name** ES-AREA1\US32_USR_INS22923
Last Calib Update 10/3/2022 8:55 AM **Batch State** Processed
Quant Batch Version 10.1 **Quant Report Version** 10.1
Acq. Time 9/30/2022 5:46 PM **Data File** tq093008.D
Sample Type Sample **Sample Name** 2.0 uL #3318-24-5 ICAL Level 9
Dilution 1 **Acq. Method** tq22m0831marks

Sample Chromatogram

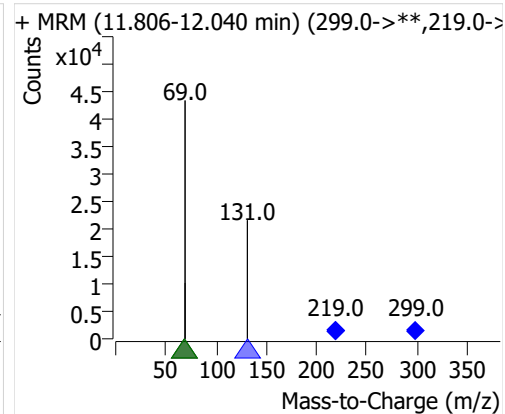
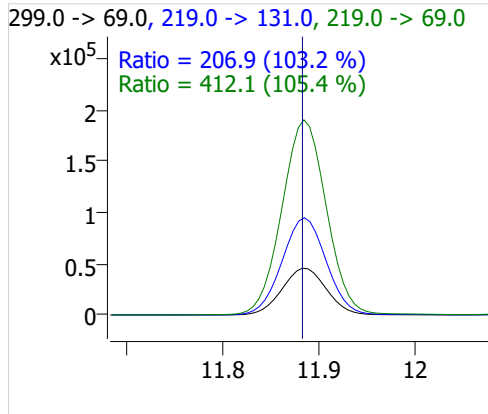
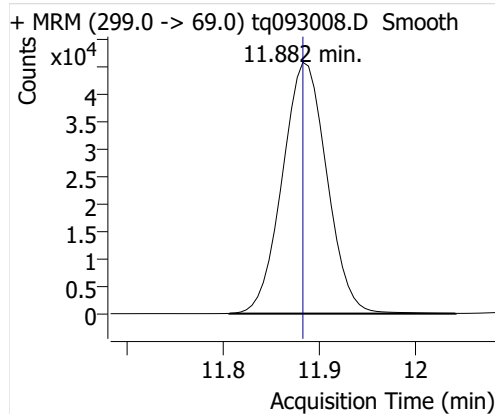


Compound	ISTD	RT	Resp.	ISTD Resp.	Resp. Ratio	Final Conc	Units
4:2 FTOH	6:2 FTOH-C13	11.825	346459	69319	4.9980	9.0925	ng
5:2sFTOH	6:2 FTOH-C13	11.882	146723	69319	2.1166	8.9442	ng
7:2sFTOH	6:2 FTOH-C13	13.183	294500	69319	4.2485	8.9271	ng
6:2 FTOH	6:2 FTOH-C13	13.217	612227	69319	8.8320	8.7469	ng
8:2 FTOH-C13	6:2 FTOH-C13	14.412	23240	69319	0.3353	0.9608	ng
8:2 FTOH	6:2 FTOH-C13	14.413	171334	69319	2.4717	8.8970	ng
10:2 FTOH	6:2 FTOH-C13	15.477	66451	69319	0.9586	9.1745	ng
12:2 FTOH	6:2 FTOH-C13	16.458	247313	69319	3.5677	9.3982	ng
NMeFOSA	6:2 FTOH-C13	18.662	178190	69319	2.5706	9.1650	ng
NetFOSA	6:2 FTOH-C13	18.931	794633	69319	11.4633	9.3377	ng

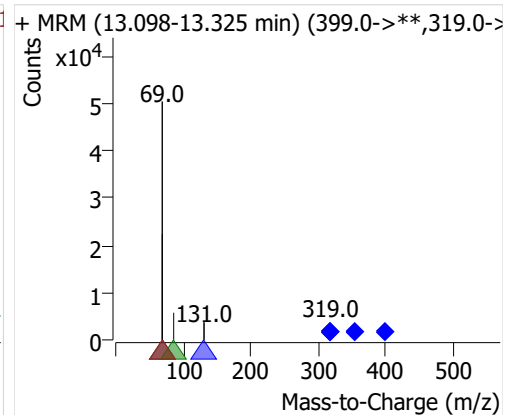
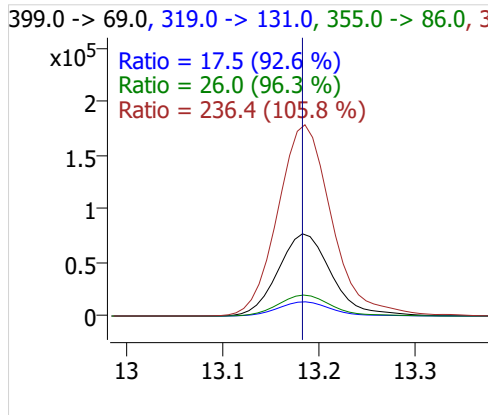
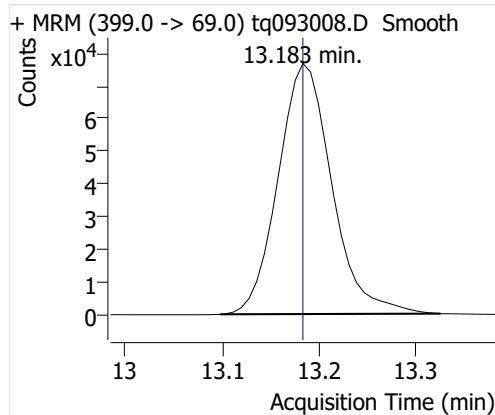
4:2 FTOH



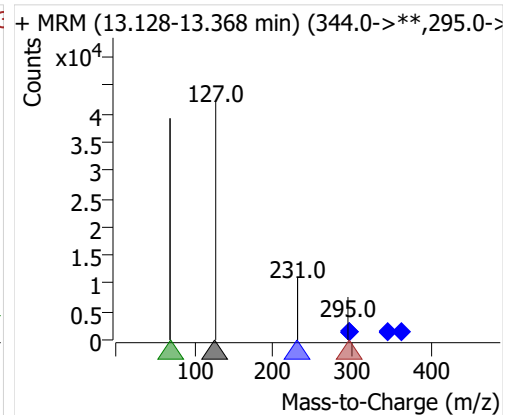
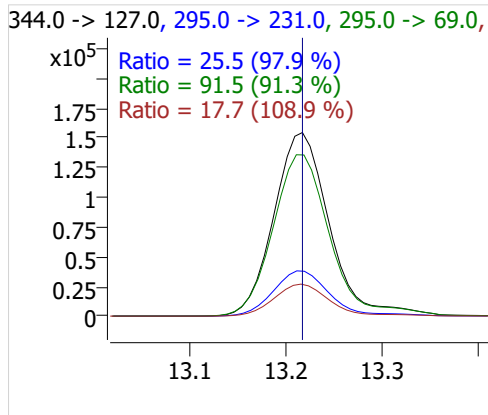
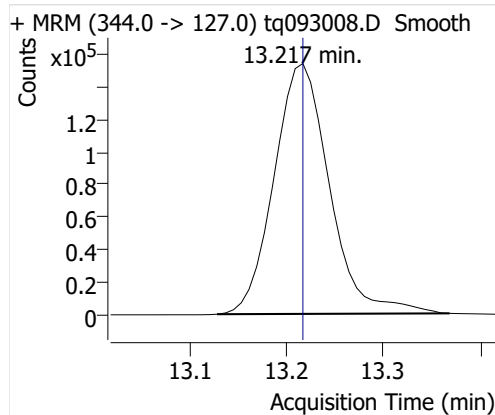
5:2sFTOH



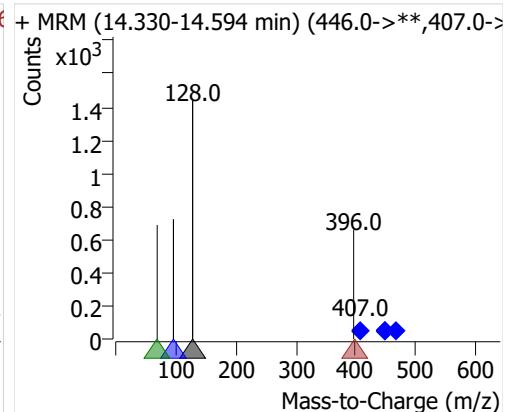
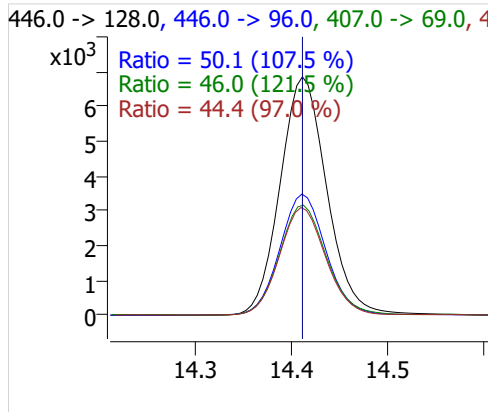
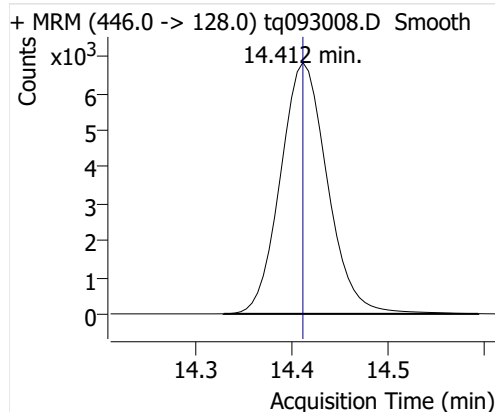
7:2sFTOH



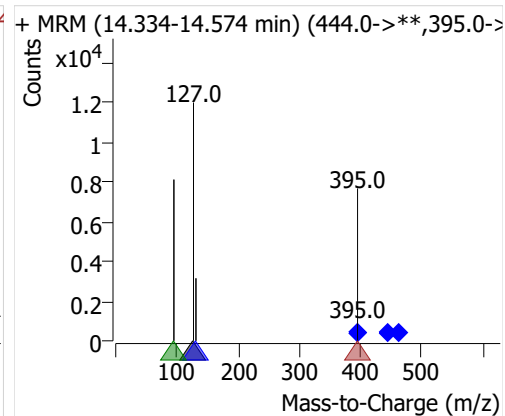
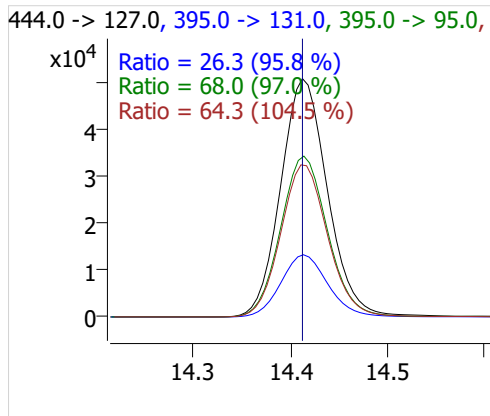
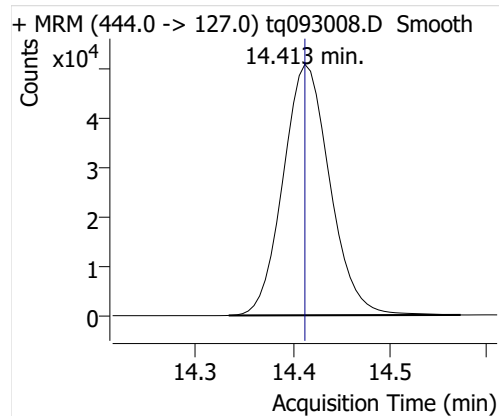
6:2 FTOH



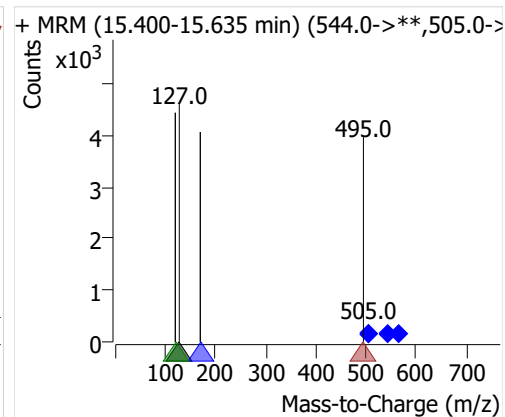
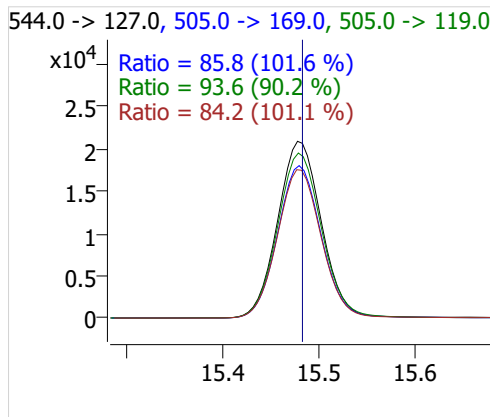
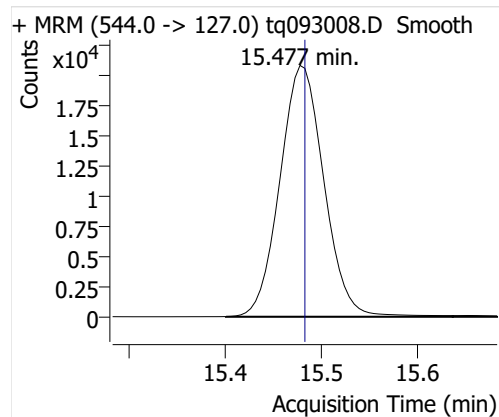
8:2 FTOH-C13



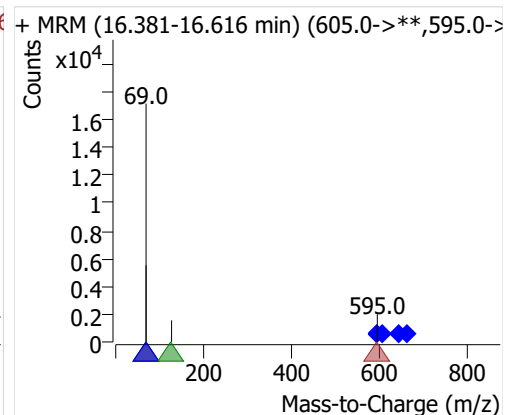
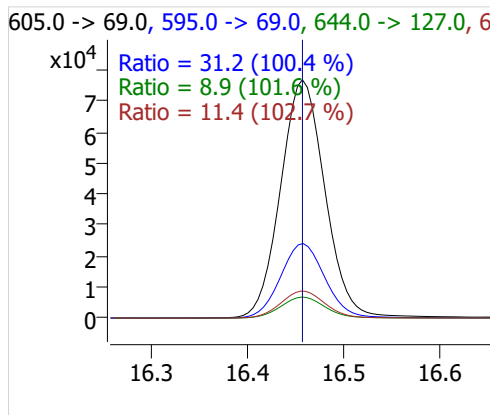
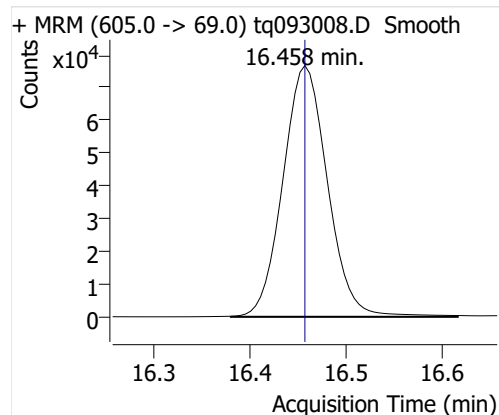
8:2 FTOH



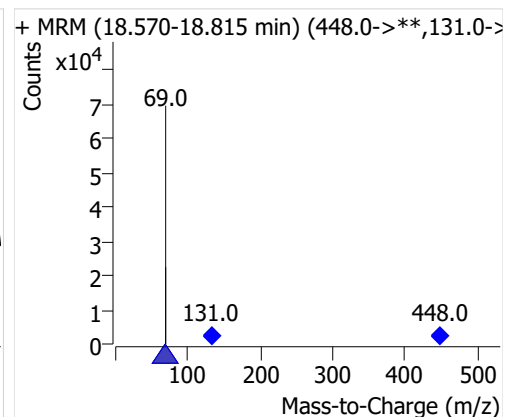
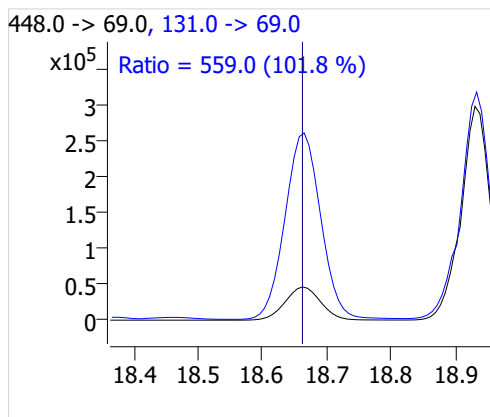
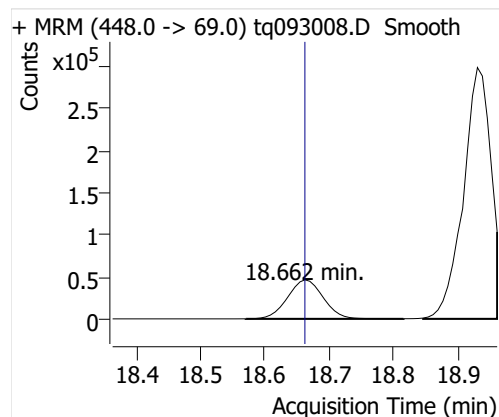
10:2 FTOH



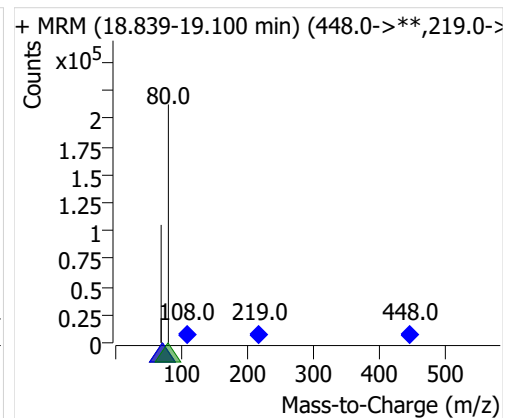
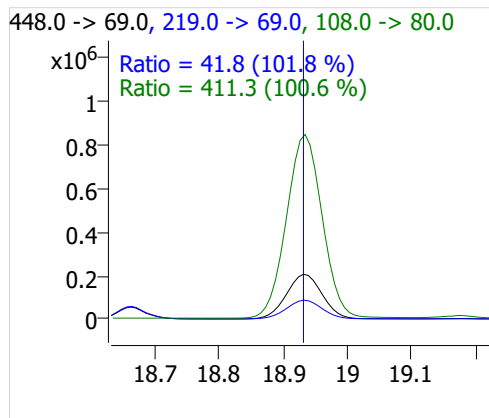
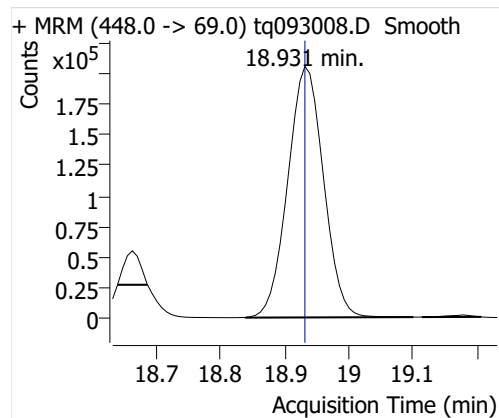
12:2 FTOH



NMeFOSA



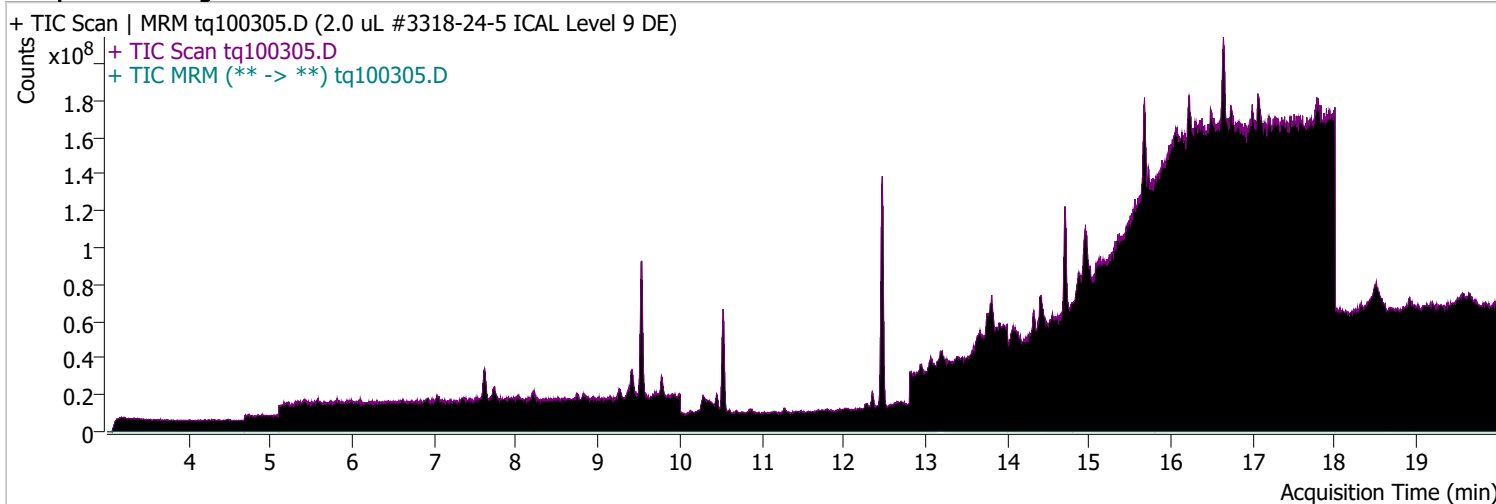
NETFOSA



Quantitative Analysis Sample Report

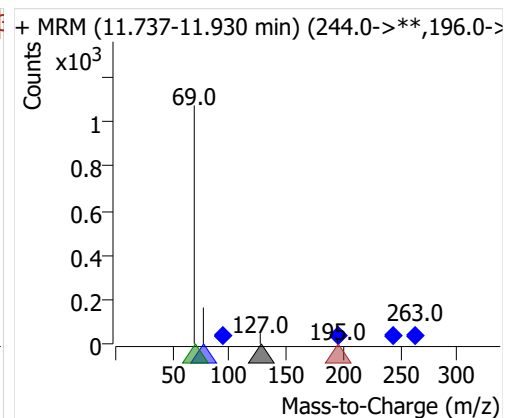
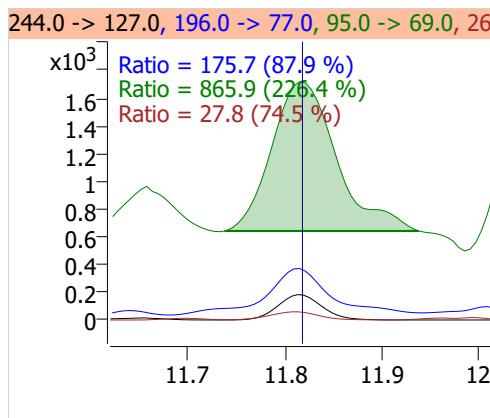
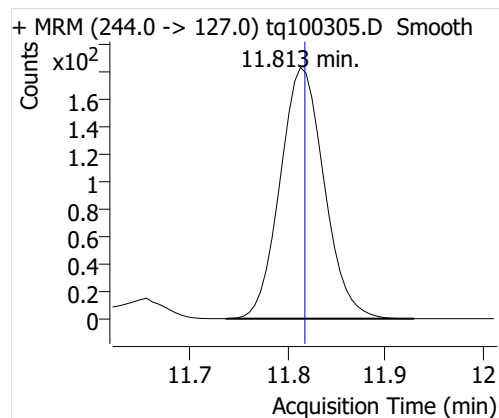
Batch Path	D:\MassHunter\GCMS\1\data\03OCT22\QuantResults\03oct22.batch.bin		
Analysis Time	10/4/2022 8:46 AM	Analyst Name	ES-AREA1\US32_USR_INS22923
Report Time	10/28/2022 8:56:20 AM	Reporter Name	ES-AREA1\US32_USR_INS22923
Last Calib Update	10/3/2022 8:55 AM	Batch State	Processed
Quant Batch Version	10.1	Quant Report Version	10.1
Acq. Time	10/3/2022 12:20 PM	Data File	tq100305.D
Sample Type	Sample	Sample Name	2.0 uL #3318-24-5 ICAL Level 9 DE
Dilution	1	Acq. Method	tq22m0930marks

Sample Chromatogram

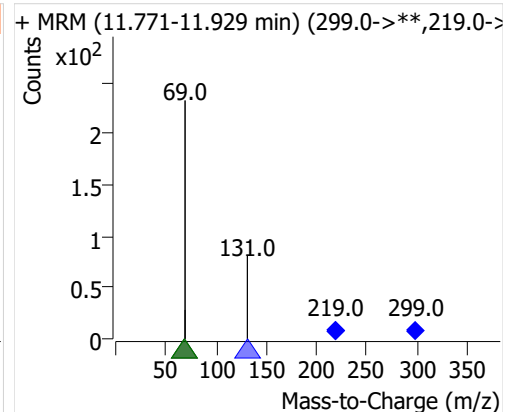
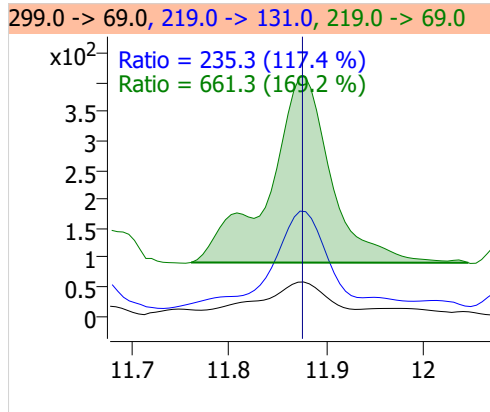
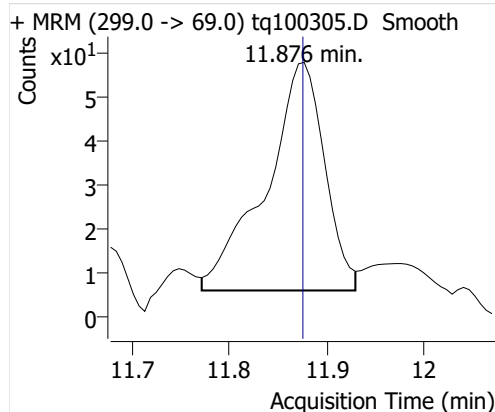


Compound	ISTD	RT	Resp.	ISTD Resp.	Resp. Ratio	Final Conc	Units
4:2 FTOH	6:2 FTOH-C13	11.813	577	71087	0.0081	0.0148	ng
5:2sFTOH	6:2 FTOH-C13	11.876	217	71087	0.0030	0.0129	ng
7:2sFTOH	6:2 FTOH-C13	13.175	162	71087	0.0023	0.0048	ng
6:2 FTOH	6:2 FTOH-C13	13.209	1812	71087	0.0255	0.0252	ng
8:2 FTOH-C13	6:2 FTOH-C13	14.406	23023	71087	0.3239	0.9282	ng
8:2 FTOH	6:2 FTOH-C13	14.413	500	71087	0.0070	0.0253	ng
10:2 FTOH	6:2 FTOH-C13	15.472	260	71087	0.0037	0.0350	ng
12:2 FTOH	6:2 FTOH-C13	16.457	2277	71087	0.0320	0.0844	ng
NMeFOSA	6:2 FTOH-C13	18.662	2006	71087	0.0282	0.1006	ng
NEtFOSA	6:2 FTOH-C13	18.931	2829	71087	0.0398	0.0324	ng

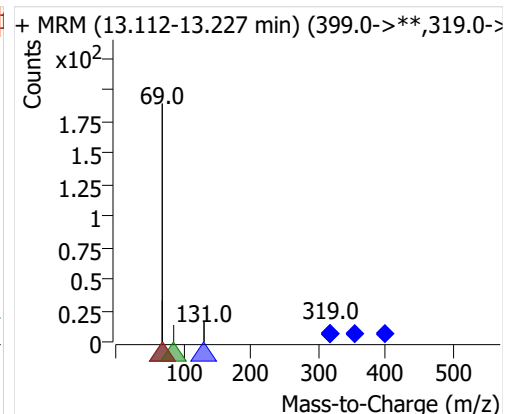
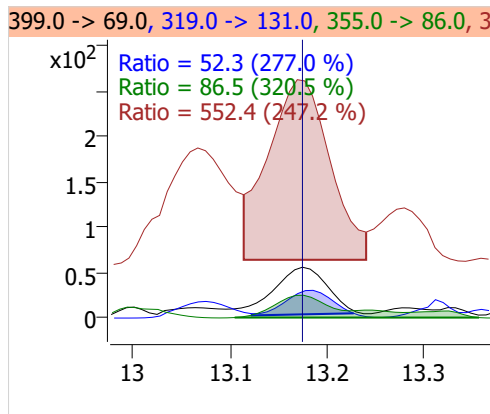
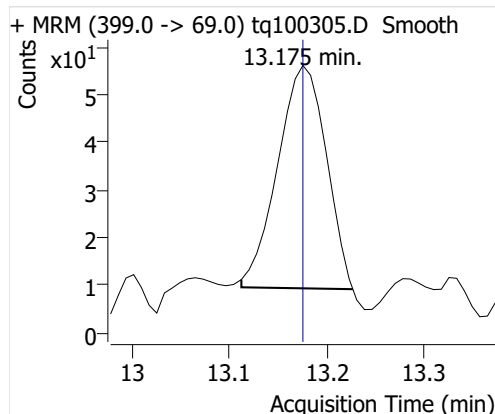
4:2 FTOH



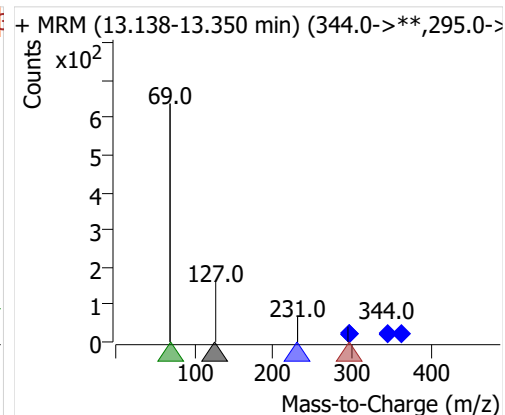
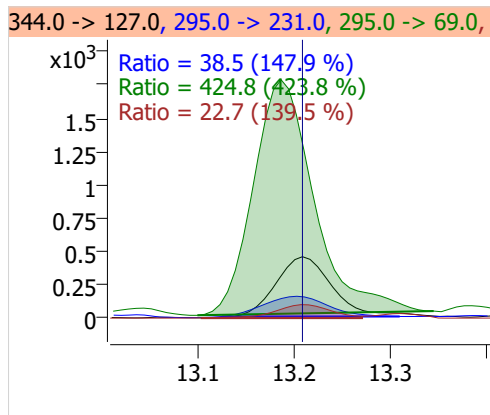
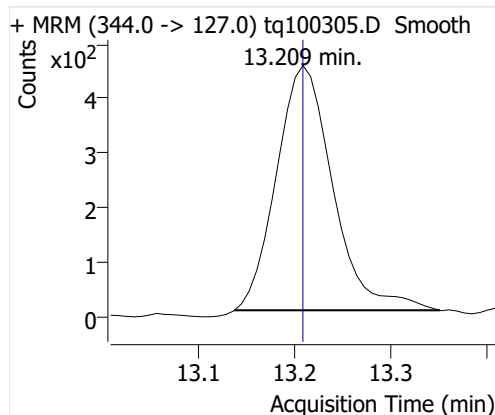
5:2sFTOH



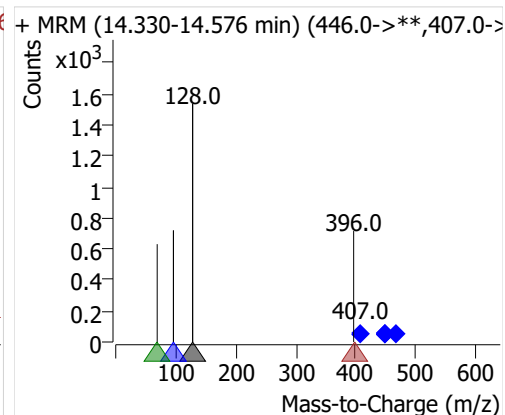
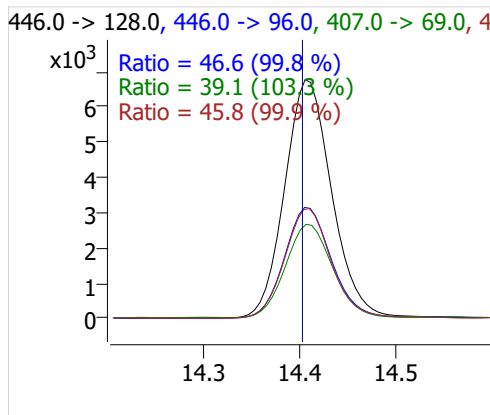
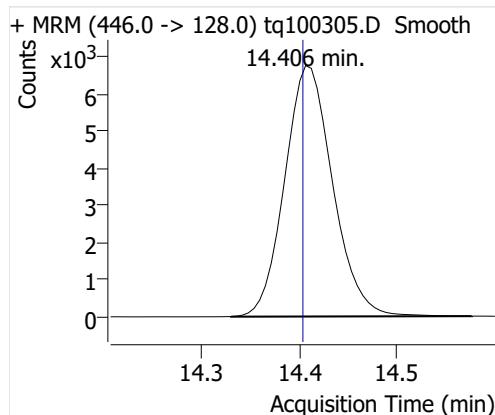
7:2sFTOH



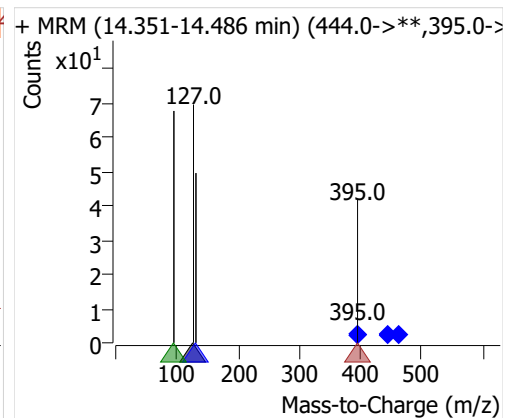
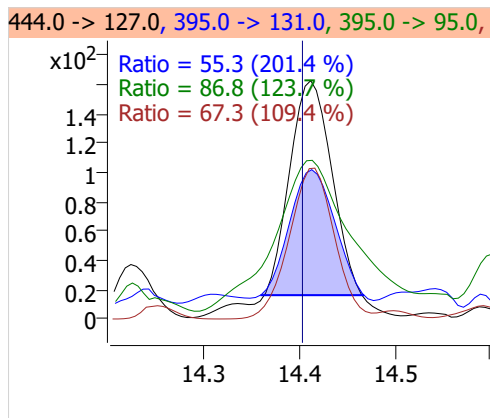
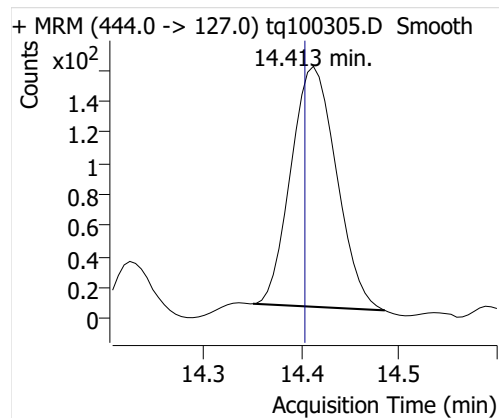
6:2 FTOH



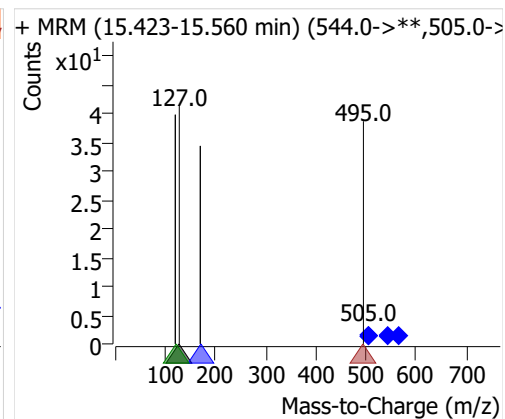
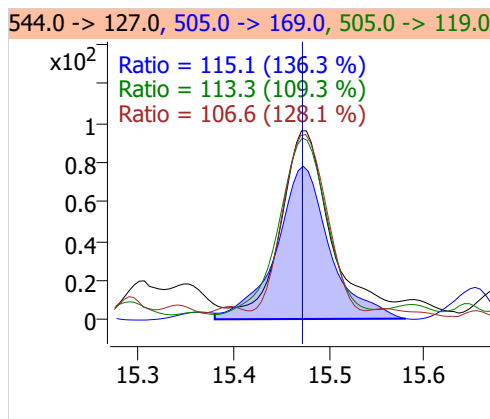
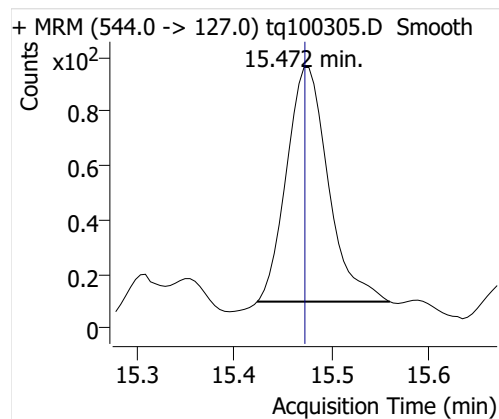
8:2 FTOH-C13



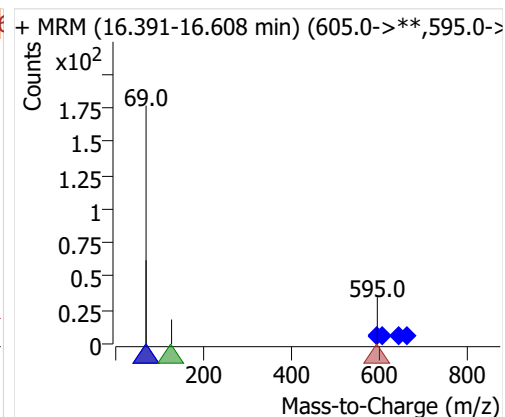
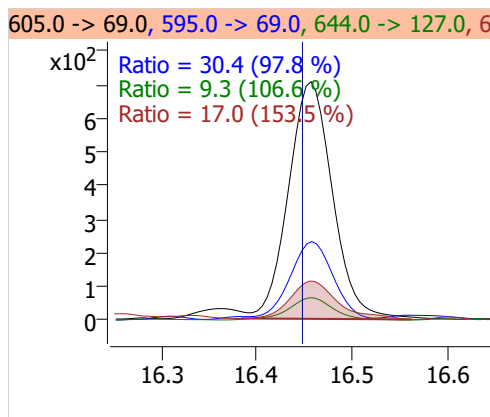
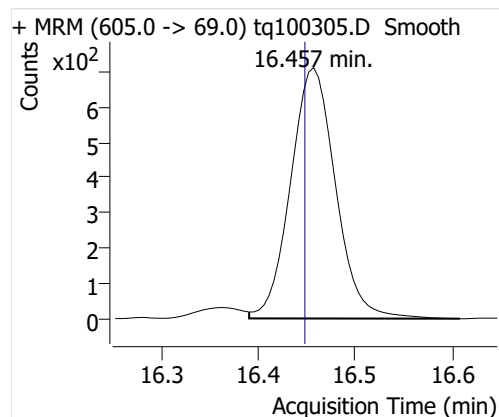
8:2 FTOH



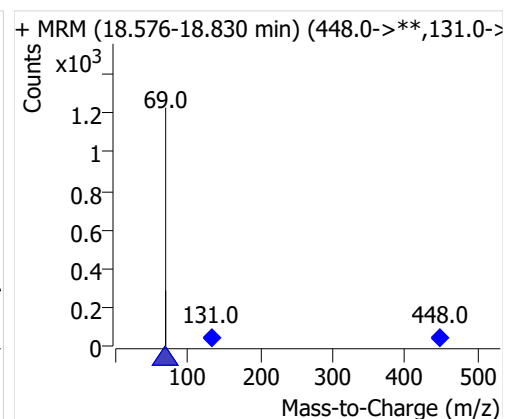
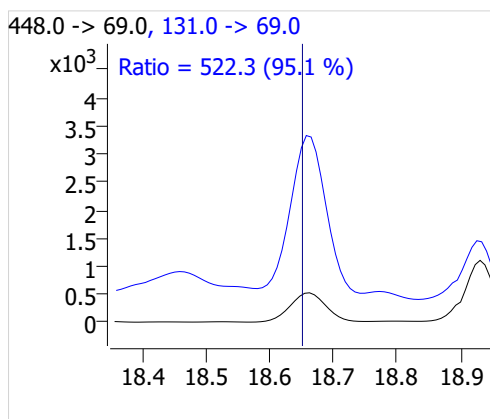
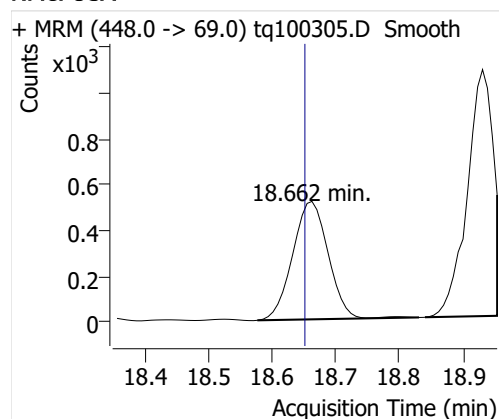
10:2 FTOH



12:2 FTOH



NMeFOSA



NETFOSA

